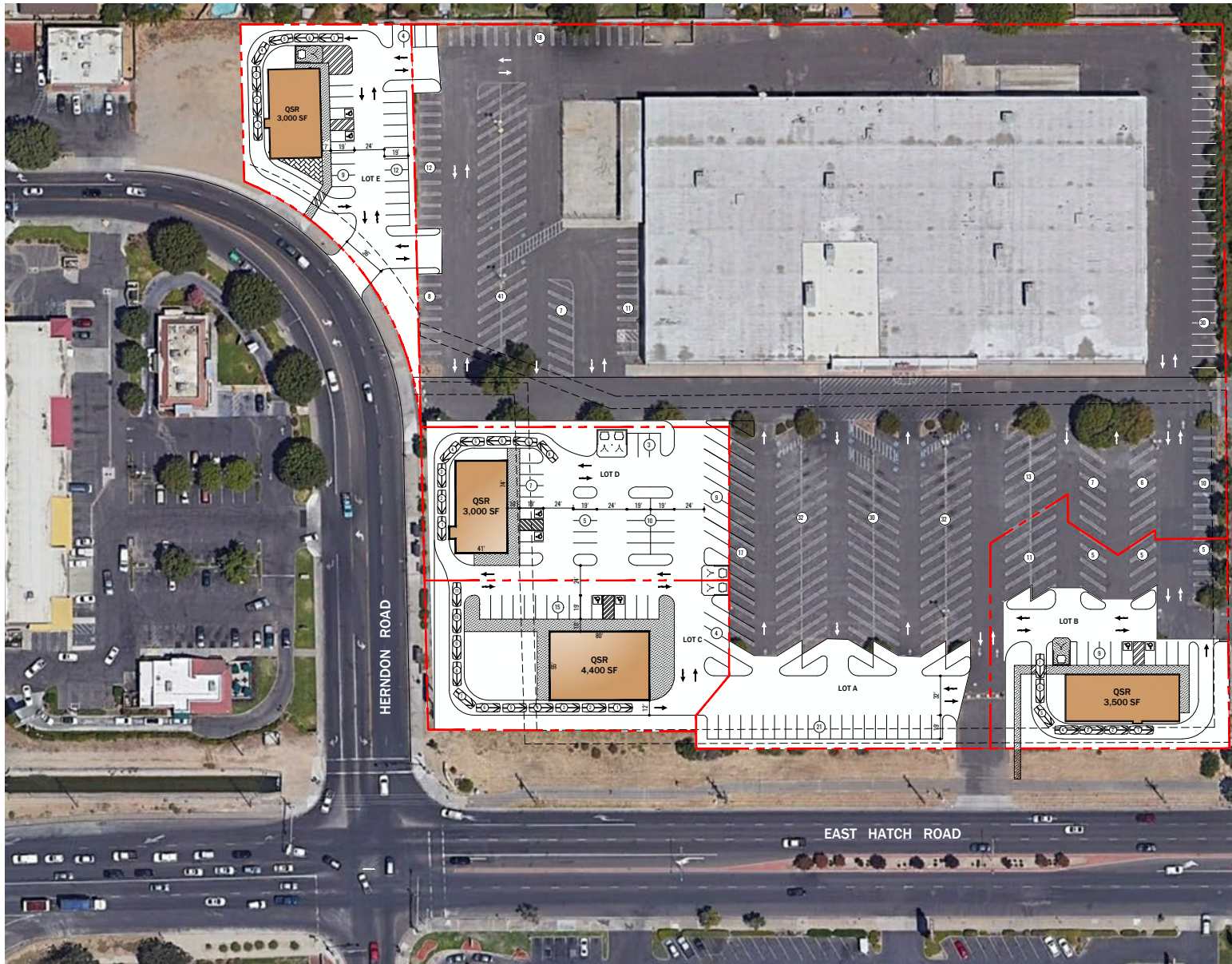


CERES CROSSINGS NOW PRE-LEASING

HWY 99 – ADJACENT TO HOME DEPOT – CERES, CA

Proposed Site Plan A



JOHN CUMBELICH
john@cumbelich.com
t. 925.935.5400 X101
CA-DRE Lic #01006249

TIM SEILER
tim@cumbelich.com
t. 925.935.5400 X106
CA-DRE Lic #00176263

JOHN CUMBELICH & ASSOCIATES
1330 N Broadway, Suite 200A
Walnut Creek, CA 94596
t. 925.935.5400 www.cumbelich.com

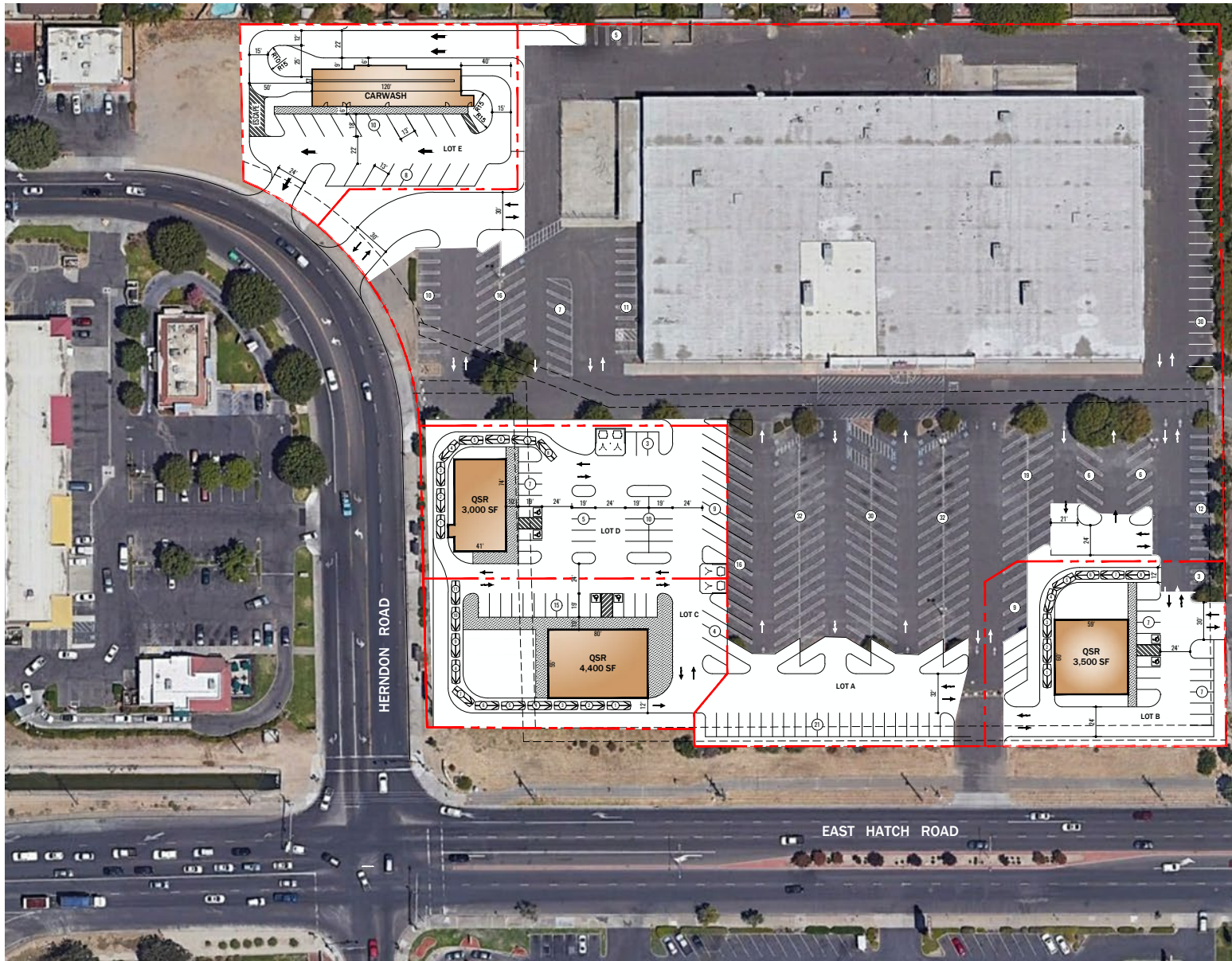
PARTNER **XTEAM**
RETAIL ADVISORS

JohnCumbelich
& Associates

CERES CROSSINGS NOW PRE-LEASING

HWY 99 – ADJACENT TO HOME DEPOT – CERES, CA

Proposed Site Plan B



JOHN CUMBELICH
john@cumbelich.com
t. 925.935.5400 X101
CA-DRE Lic #01006249

TIM SEILER
tim@cumbelich.com
t. 925.935.5400 X106
CA-DRE Lic #00176263

JOHN CUMBELICH & ASSOCIATES
1330 N Broadway, Suite 200A
Walnut Creek, CA 94596
t. 925.935.5400 www.cumbelich.com

PARTNER **XTEAM**
RETAIL ADVISORS

JohnCumbelich
& Associates